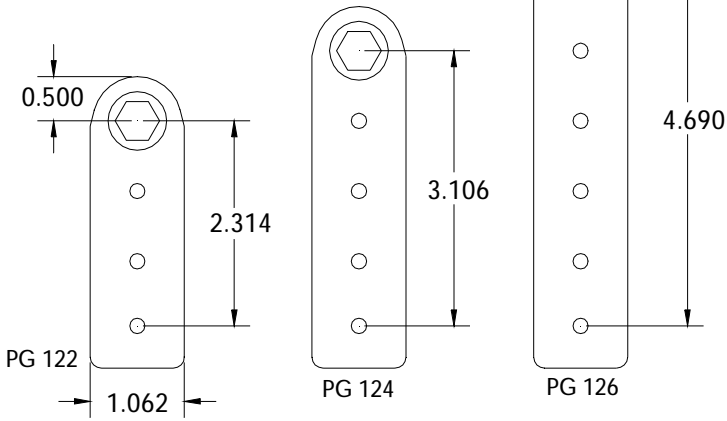




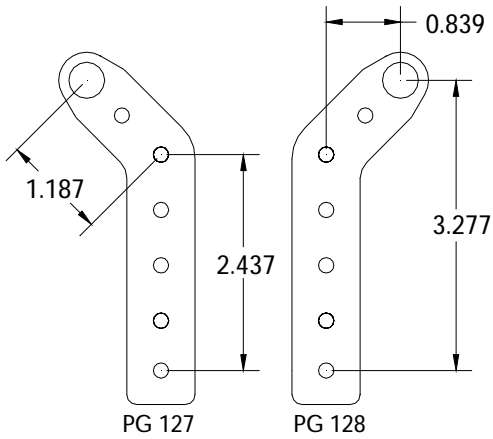
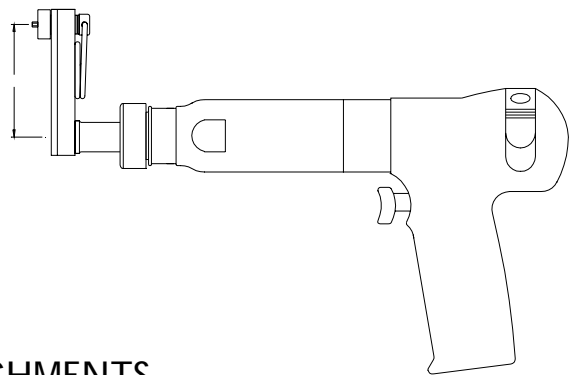
SERIES 2 ATTACHMENTS

HW ATTACHMENTS
 ARE RATED AT 160 IN LBS.
 18.07 Nm
 # 10 PIN MAX

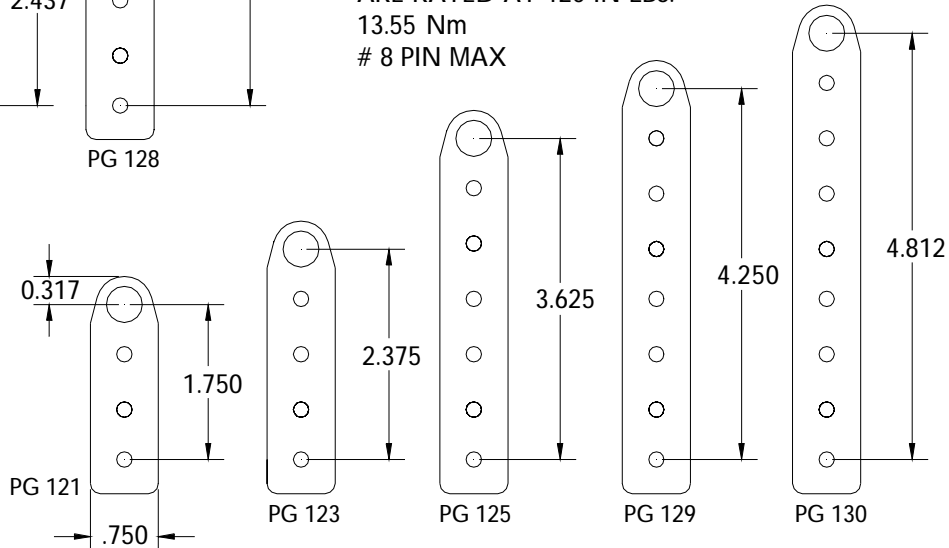


.500 (width)
 SERIES 2 L ATTACHMENTS
 ARE 0.500 THICK

STANDARD OFFSETS

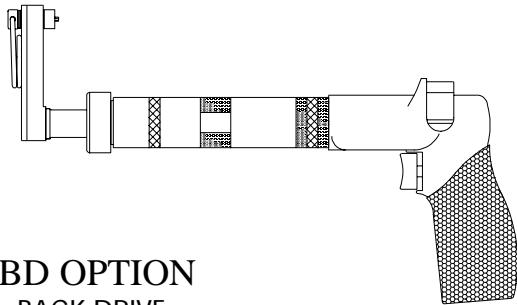


HO ATTACHMENTS
 ARE RATED AT 120 IN LBS.
 13.55 Nm
 # 8 PIN MAX



OPTIONS

SERIES 2 ATTACHMENTS

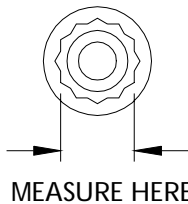


THE SOCKET, HEX KEY SET UP, MOTOR ROTATION, AND CLUTCH CAM IS REVERSED FROM STANDARD.
NOTE: SET TORQUE WITH MOTOR IN REVERSE

FOR BACK DRIVE
ADD BD AFTER TOOL ORDER NUMBER

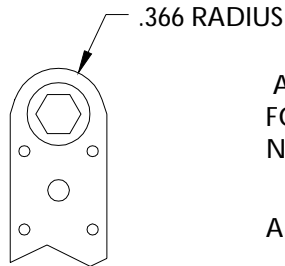
BD OPTION
BACK DRIVE

X OPTION
12 POINT



CHANGE TO 12 POINT CONFIGURATION
ADD X AFTER NOSE GEAR NUMBER

HD OPTION
HEAVY DUTY
LARGE NOSE

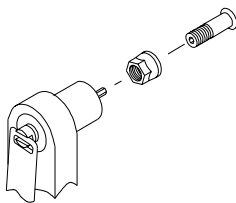


ALLOWS FOR A LARGER HEX SIZE FOR THE HEX THRU AND HEX FLUSH NOSE GEARS

ADD HD AFTER TOOL ORDER NUMBER

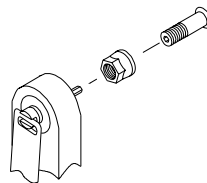
HO ATTACHMENTS ONLY

HD OPTION NOSE GEARS



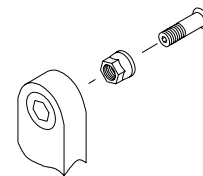
NOSE GEARS FOR SOCKETS.
5/16 HEX DRIVER FOR HD SERIES 2 SOCKETS.

PART NO.	SIZE	TYPE
15382	5/16	HD HEX DRIVER
15373	1/4	SQ DRIVE MALE



FLUSH STYLE.
THE SOCKET HEX IS BUILT INTO THE GEAR OF THE TOOL.
NO SOCKET IS USED

PART NO.	SIZE	TYPE
15376	9/32	HEX FLUSH
15377	5/16	HEX FLUSH
15460	11/32	HEX FLUSH



HEX THRU STYLE.
HEX RUNS THROUGH NOSE GEAR.
HEX KEY SPRING IS NOT SUPPLIED.

PART NO.	HEX SIZE	TYPE
15381	9/32	HEX THRU
15337	5/16	HEX THRU
15461	11/32	HEX THRU

HD OPTION NOT AVAILABLE FOR 13210, 13211, 13212, 13213
RIGHT AND LEFT HAND ATTACHMENTS