

	A	B	C	D	E	SERIES 2 20 DEG INSTALLATION	
INCH	.500	1.400	.343	1.678	1.250	MAXIMUM RECOMMENDED FASTENER TORQUE	120 INCH LBS.
MM	12.7	35.5	8.7	42.6	31.7		13.55 Nm

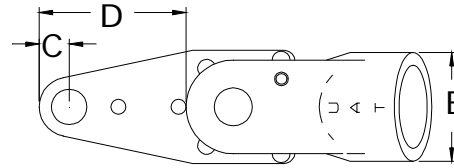
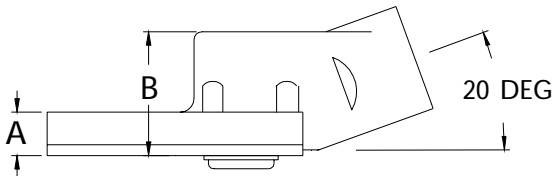


TORQUE CONTROL

16076 ATTACHMENT ONLY

20 DEGREE SERIES 2 INSTALLATION

WITH BALL CLUTCH

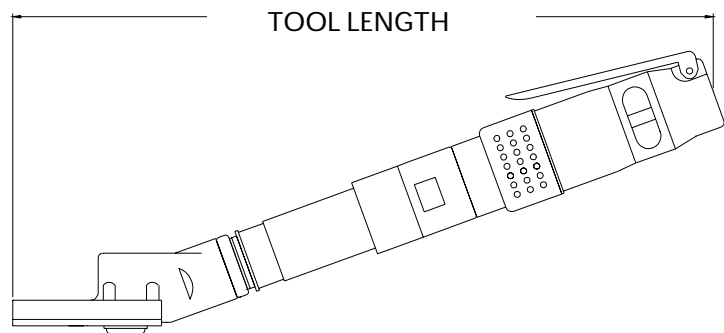


-8 PIN MAX

* Maximum torque of the motor exceeds the maximum torque range of the attachment. High maintenance should be expected when operated at the upper torque capacity range.

TORQUE CONTROL 20 DEGREE TOOLS				OUTPUT AT FASTENER		TOOL ORDER NUMBER
MOTOR	RPM	REVERSIBLE	TYPE	TORQUE INCH LB.	TORQUE Nm	
.40	250	YES	SRD1	15 - 120*	1.6 - 13.5*	16098
.40	450	YES	SRD1	15 - 114	1.6 - 12.8	16099
.60	250	NO	SD2	15 - 120*	1.6 - 13.5*	16100
.60	450	NO	SD2	15 - 120*	1.6 - 13.5*	16101

TOOL LENGTH			
RPM	TYPE	INCH	MM
250	SRD1	14.6	370
450	SRD1	13.7	347
250	SD2K	14.6	370
450	SD2K	13.7	347



NOSE GEARS FOR SOCKETS.
HEX DRIVER FOR HO SERIES 2 SOCKETS

PART NO.	SIZE	TYPE
12467	9/32	HEX DRIVER
12468	1/4	SQ DRIVE MALE

FLUSH STYLE.
THE SOCKET HEX IS BUILT INTO THE GEAR OF THE TOOL.
NO SOCKET IS USED.

PART NO.	HEX SIZE	TYPE
12469	7/32	HEX FLU SH
12470	1/4	HEX FLU SH
12471	9/32	HEX FLU SH

HEX THRU STYLE.
HEX RUNS THROUGH NOSE GEAR.
HEX KEY SPRING IS NOT SUPPLIED.

PART NO.	HEX SIZE	TYPE
12474	3/16	HEX THRU
12475	7/32	HEX THRU
12476	1/4	HEX THRU
12477	9/32	HEX THRU