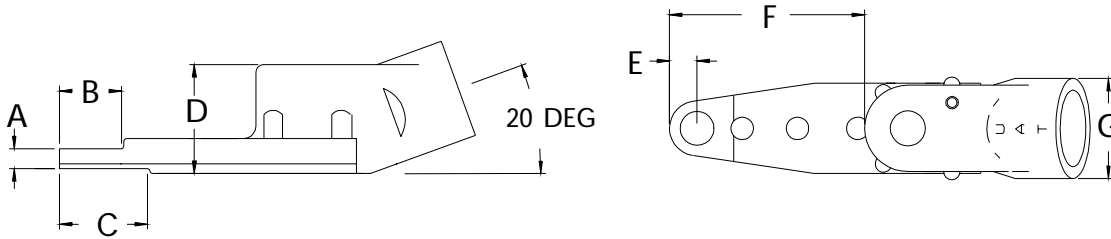


	A	B	C	D	E	F	G	SERIES 1 20 DEG INSTALLATION	
INCH	.200	.800	1.250	1.300	.312	2.640	1.250	MAXIMUM RECOMMENDED FASTENER TORQUE	45 INCH LBS.
MM	5.08	20.3	31.7	33.0	7.92	67.0	31.7		5.0 Nm



TORQUE CONTROL
10589 ATTACHMENT ONLY
20 DEGREE SERIES 1 INSTALLATION
WITH BALL CLUTCH

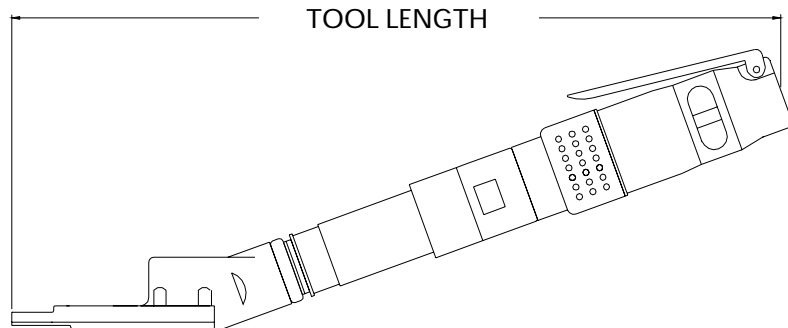


-6 PIN MAX

* Maximum torque of the motor exceeds the maximum torque range of the attachment. High maintenance should be expected when operated at the upper torque capacity range.

TORQUE CONTROL 20 DEGREE TOOLS				OUTPUT AT FASTENER		TOOL ORDER NUMBER
MOTOR	RPM	REVERSIBLE	TYPE	TORQUE INCH LB.	TORQUE Nm	
.40	250	YES	SRD1	15 - 45*	1.6 - 5.0*	15608
.40	450	YES	SRD1	15 - 45*	1.6 - 5.0*	15609
.60	250	NO	SD2K	15 - 45*	1.6 - 5.0*	15610
.60	450	NO	SD2K	15 - 45*	1.6 - 5.0*	15611

TOOL LENGTH			
RPM	TYPE	INCH	MM
250	SDK	14.3	363
500	SDK	14.3	363
250	SRD1	15.6	396
450	SRD1	14.7	373
250	SD2K	15.6	396
450	SD2K	14.7	373



HEX THRU STYLE.
 HEX RUNS THROUGH NOSE GEAR.
 HEX KEY SPRING IS NOT SUPPLIED.

PART NO.	HEX SIZE	TYPE
15600	7/32	HEX THRU
10590	1/4	HEX THRU
15601	9/32	HEX THRU
10908	5/16	HEX THRU