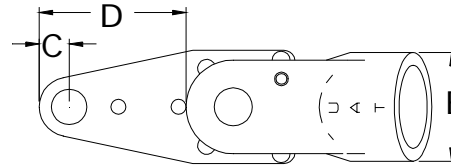
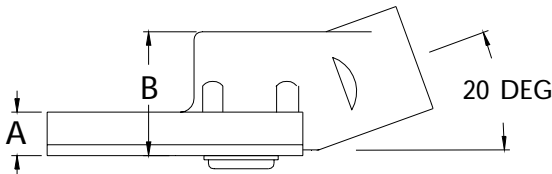


	A	B	C	D	E	SERIES 2 20 DEG INSTALLATION	
INCH	.500	1.400	.343	1.678	1.250	MAXIMUM RECOMMENDED FASTENER TORQUE	120 INCH LBS.
MM	12.7	35.5	8.7	42.6	31.7		13.55 Nm



**STALL TYPE
16076 ATTACHMENT ONLY
20 DEGREE SERIES 2 INSTALLATION**

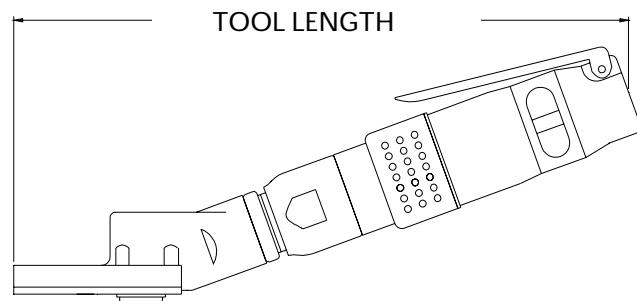


-8 PIN MAX

* Maximum torque of the motor exceeds the maximum torque range of the attachment. High maintenance should be expected when operated at the upper torque capacity range.

STALL TYPE 20 DEGREE TOOLS					OUTPUT AT FASTENER		TOOL ORDER NUMBER
MOTOR	RPM	RPM FASTENER	REVERSIBLE	TYPE	TORQUE INCH LB.	TORQUE Nm	
.40	250	180	YES	SRD1	120*	13.5*	16081
.40	450	326	YES	SRD1	114	12.8	16082
.60	250	180	NO	SD2	120*	13.5*	16083
.60	450	326	NO	SD2	120*	13.5*	16084

TOOL LENGTH			
RPM	TYPE	INCH	MM
250	SRD1	11.5	292
450	SRD1	10.6	269
250	SD2	11.5	292
450	SD2	10.6	269



NOSE GEARS FOR SOCKETS.
HEX DRIVER FOR HO SERIES 2 SOCKETS

PART NO.	SIZE	TYPE
12467	9/32	HEX DRIVER
12468	1/4	SQ DRIVE MALE

FLUSH STYLE.
THE SOCKET HEX IS BUILT INTO THE GEAR OF THE TOOL.
NO SOCKET IS USED.

PART NO.	HEX SIZE	TYPE
12469	7/32	HEX FLU SH
12470	1/4	HEX FLU SH
12471	9/32	HEX FLU SH

HEX THRU STYLE.
HEX RUNS THROUGH NOSE GEAR.
HEX KEY SPRING IS NOT SUPPLIED.

PART NO.	HEX SIZE	TYPE
12474	3/16	HEX THRU
12475	7/32	HEX THRU
12476	1/4	HEX THRU
12477	9/32	HEX THRU