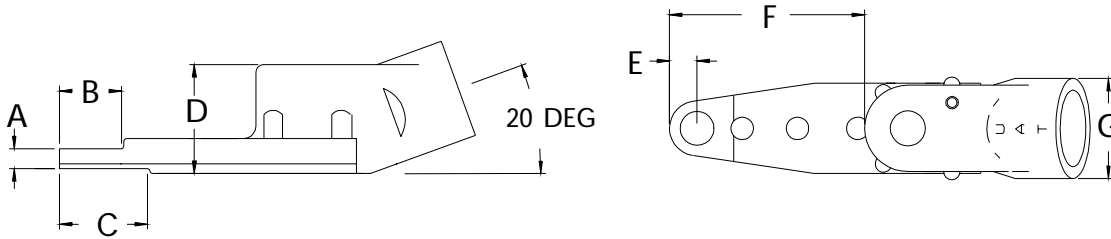


	A	B	C	D	E	F	G	SERIES 1 20 DEG INSTALLATION	
INCH	.200	.800	1.250	1.300	.312	2.640	1.250	MAXIMUM RECOMMENDED FASTENER TORQUE	45 INCH LBS.
MM	5.08	20.3	31.7	33.0	7.92	67.0	31.7		5.0 Nm



**STALL TYPE
10589 ATTACHMENT ONLY
20 DEGREE SERIES 1 INSTALLATION**

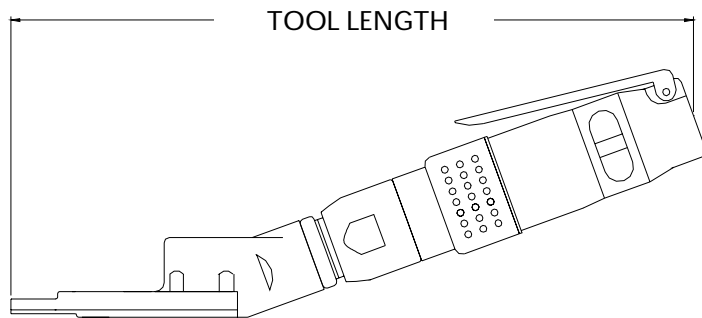


-6 PIN MAX

* Maximum torque of the motor exceeds the maximum torque range of the attachment. High maintenance should be expected when operated at the upper torque capacity range.

STALL TYPE 20 DEGREE TOOLS				OUTPUT AT FASTENER		TOOL ORDER NUMBER
MOTOR	RPM	REVERSIBLE	TYPE	TORQUE INCH LB.	TORQUE Nm	
.30	250	NO	SDK	45*	5.0*	15602
.30	500	NO	SDK	45*	5.0*	15603
.40	250	YES	SRD1	45*	5.0*	15604
.40	450	YES	SRD1	45*	5.0*	15605
.60	250	NO	SD2K	45*	5.0*	15606
.60	450	NO	SD2K	45*	5.0*	15607

TOOL LENGTH			
RPM	TYPE	INCH	MM
250	SDK	11.2	284
500	SDK	11.2	284
250	SRD1	12.5	317
450	SRD1	11.6	294
250	SD2K	12.5	317
450	SD2K	11.6	294



HEX THRU STYLE.
HEX RUNS THROUGH NOSE GEAR.
HEX KEY SPRING IS NOT SUPPLIED.

PART NO.	HEX SIZE	TYPE
15600	7/32	HEX THRU
10590	1/4	HEX THRU
15601	9/32	HEX THRU
10908	5/16	HEX THRU