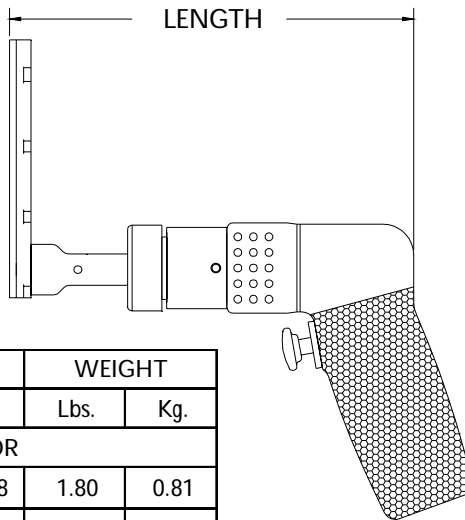
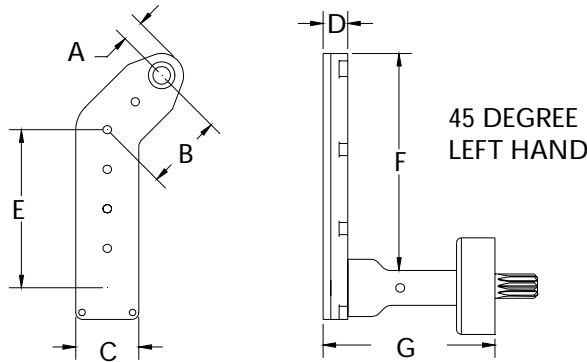


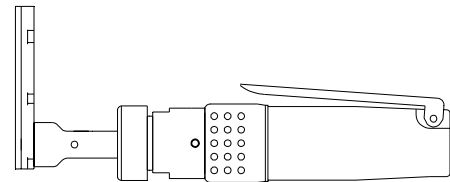
| | A | B | C | D | E | F | G | SERIES 2 L DRILL | |
|------|------|-------|-------|------|-------|-------|-------|---------------------------------------|-----------|
| INCH | .327 | 1.109 | .900 | .350 | 2.250 | 3.106 | 1.858 | MAXIMUM RECOMMENDED DRILL DIAMETER | .250 INCH |
| MM | 8.30 | 28.16 | 22.86 | 8.89 | 57.15 | 78.89 | 47.19 | | 6.35 mm |



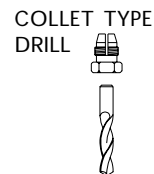
13824 ATTACHMENT ONLY SHORT



| TOOL ORDER NUMBER | R.P.M. | LENGTH | | WEIGHT | |
|-----------------------------|--------|--------|-------|--------|------|
| | | Inch | mm | Lbs. | Kg. |
| D SERIES .30 HP MOTOR | | | | | |
| 16365 | 250 | 7.00 | 177.8 | 1.80 | 0.81 |
| 14543 | 500 | 7.00 | 177.8 | 1.80 | 0.81 |
| 14544 | 750 | 7.00 | 177.8 | 1.80 | 0.81 |
| 14545 | 1000 | 7.00 | 177.8 | 1.80 | 0.81 |
| 14546 | 1500 | 7.00 | 177.8 | 1.80 | 0.81 |
| 14547 | 2800 | 6.10 | 154.9 | 1.52 | 0.68 |
| D2 SERIES .60 HP MOTOR | | | | | |
| 16366 | 250 | 8.95 | 227.3 | 3.37 | 1.53 |
| 14548 | 450 | 8.35 | 212.0 | 2.67 | 1.21 |
| 14549 | 1000 | 8.35 | 212.0 | 2.67 | 1.21 |
| 14550 | 2000 | 7.10 | 180.3 | 2.42 | 1.09 |
| 14551 | 2700 | 7.10 | 180.3 | 2.42 | 1.09 |
| 14552 | 3500 | 7.10 | 180.3 | 2.42 | 1.09 |
| RD2 .40 HP REVERSIBLE MOTOR | | | | | |
| 16367 | 250 | 8.95 | 227.3 | 3.37 | 1.53 |
| 14553 | 450 | 8.35 | 212.0 | 2.92 | 1.32 |
| 14554 | 1000 | 8.35 | 212.0 | 2.92 | 1.32 |
| 14555 | 2000 | 7.10 | 180.3 | 2.67 | 1.21 |
| 14556 | 2700 | 7.10 | 180.3 | 2.67 | 1.21 |
| 14557 | 3500 | 7.10 | 180.3 | 2.67 | 1.21 |



Add an S after the tool order number for the straight handle option.



| INTERNAL THREAD | |
|-----------------|---|
| ADD TO TOOL No. | |
| 1/4-28 | A |
| 10-32 | C |
| 9/32-40 | E |
| 5/16-24 | F |
| COLLET | D |