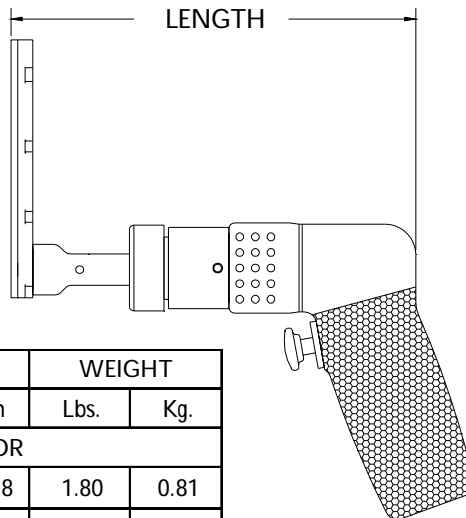
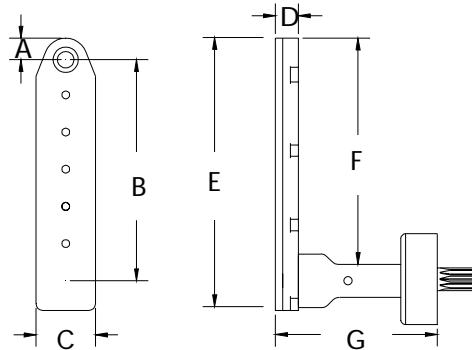


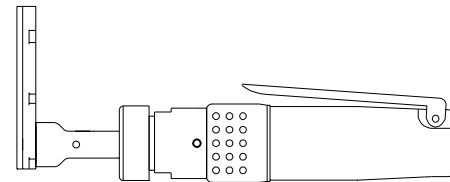
	A	B	C	D	E	F	G	SERIES 2 L DRILL	
INCH	.327	3.359	.900	.350	4.127	3.427	1.858	MAXIMUM RECOMMENDED DRILL DIAMETER	.250 INCH
MM	8.30	85.31	22.86	8.89	104.8	87.04	47.19		6.35 mm



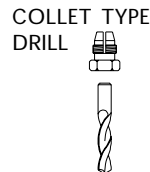
13820 ATTACHMENT ONLY SHORT



TOOL ORDER NUMBER	R.P.M.	LENGTH		WEIGHT	
		Inch	mm	Lbs.	Kg.
D SERIES .30 HP MOTOR					
16353	250	7.00	177.8	1.80	0.81
14105	500	7.00	177.8	1.80	0.81
14106	750	7.00	177.8	1.80	0.81
14107	1000	7.00	177.8	1.80	0.81
14108	1500	7.00	177.8	1.80	0.81
14109	2800	6.10	154.9	1.52	0.68
D2 SERIES .60 HP MOTOR					
16354	250	8.95	227.3	3.37	1.53
14110	450	8.35	212.0	2.67	1.21
14111	1000	8.35	212.0	2.67	1.21
14112	2000	7.10	180.3	2.42	1.09
14113	2700	7.10	180.3	2.42	1.09
14114	3500	7.10	180.3	2.42	1.09
RD2 .40 HP REVERSIBLE MOTOR					
15995	250	8.95	227.3	3.37	1.53
14115	450	8.35	212.0	2.92	1.32
14116	1000	8.35	212.0	2.92	1.32
14117	2000	7.10	180.3	2.67	1.21
14118	2700	7.10	180.3	2.67	1.21
14119	3500	7.10	180.3	2.67	1.21



Add an S after the tool order number for the straight handle option.



INTERNAL THREAD	
ADD TO TOOL No.	
1/4-28	A
10-32	C
9/32-40	E
5/16-24	F
COLLET	D