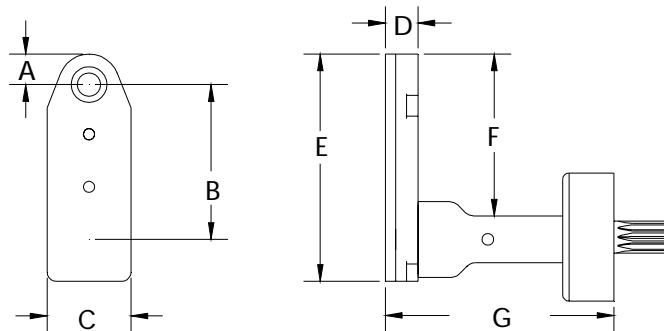


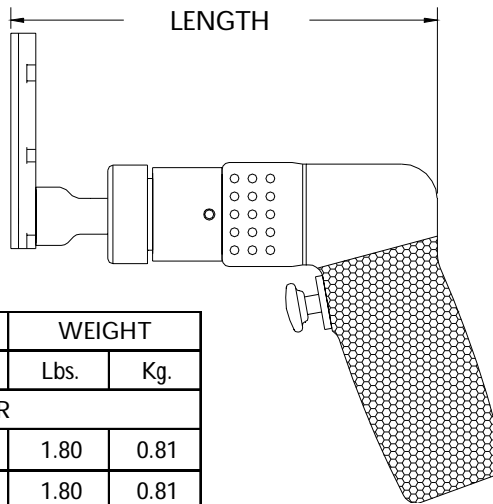
	A	B	C	D	E	F	G	SERIES 2 L DRILL	
INCH	.327	1.671	.900	.350	2.440	1.739	1.858	MAXIMUM RECOMMENDED DRILL DIAMETER	.250 INCH
MM	8.30	42.44	22.86	8.89	61.97	44.17	47.19		6.35 mm



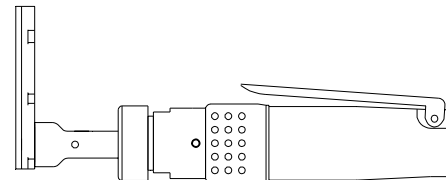
13816 ATTACHMENT ONLY SHORT



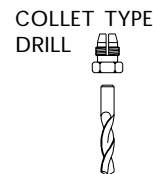
THIS ATTACHMENT REQUIRES A REVERSE RUNNING (K)
OR REVERSIBLE MOTOR.



TOOL ORDER NUMBER	R.P.M.	LENGTH		WEIGHT	
		Inch	mm	Lbs.	Kg.
DK SERIES .30 HP MOTOR					
16341	250	7.00	177.8	1.80	0.81
14045	500	7.00	177.8	1.80	0.81
14046	750	7.00	177.8	1.80	0.81
14047	1000	7.00	177.8	1.80	0.81
14049	1500	7.00	177.8	1.80	0.81
14050	2800	6.10	154.9	1.52	0.68
D2K SERIES .60 HP MOTOR					
16342	250	8.95	227.3	3.37	1.53
14051	450	8.35	212.0	2.67	1.21
14052	1000	8.35	212.0	2.67	1.21
14053	2000	7.10	180.3	2.42	1.09
14054	2700	7.10	180.3	2.42	1.09
14055	3500	7.10	180.3	2.42	1.09
RD2 .40 HP REVERSIBLE MOTOR					
16343	250	8.95	227.3	3.37	1.53
14056	450	8.35	212.0	2.92	1.32
14057	1000	8.35	212.0	2.92	1.32
14058	2000	7.10	180.3	2.67	1.21
14059	2700	7.10	180.3	2.67	1.21
14060	3500	7.10	180.3	2.67	1.21



Add an S after the tool order number
for the straight handle option.



INTERNAL THREAD	
ADD TO TOOL No.	
1/4-28	A
10-32	C
9/32-40	E
5/16-24	F
COLLET	D