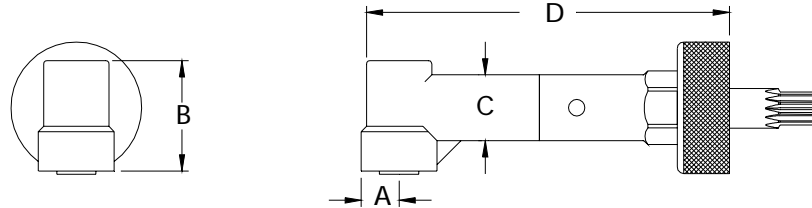


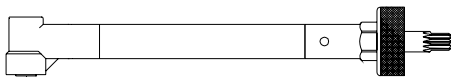
	A	B	C	D	90 DEGREE DRILL	
INCH	.362	1.049	.625	3.550	MAXIMUM RECOMMENDED DRILL DIAMETER	.250
MM	9.19	26.64	15.87	90.17		6.35 mm



ALL BEARING 90 DEGREE DRILLS

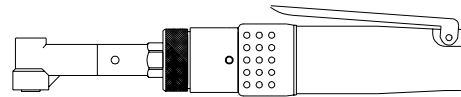


14977 ATTACHMENT ONLY PART OF THE JIFFY MODULAR DRILL SYSTEM

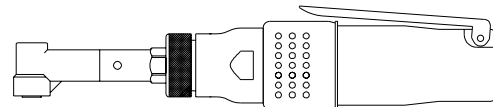


ATTACHMENT SHOWN WITH OPTIONAL
3.750" 95.25mm EXTENSION ASSEMBLY No. 15047

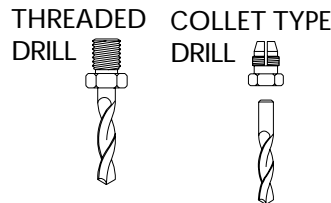
The high nickel alloy
used in our drill attachment gears
make this unit SUPERIOR
in drilling performance.



SD 2800 RPM



SD2 2700 RPM



INTERNAL THREAD	
ADD TO TOOL No.	
1/4-28	A
10-32	C
9/32-40	E
COLLET	D

TOOL ORDER NUMBER	R.P.M.	LENGTH		WEIGHT	
		Inch	mm	Lbs.	Kg.
SD SERIES .30 HP MOTOR					
16247	250	9.9	251	1.5	.68
14978	500	9.9	251	1.5	.68
14979	750	9.9	251	1.5	.68
14980	1000	9.9	251	1.5	.68
14981	1500	9.9	251	1.5	.68
14982	2800	9.0	228	1.3	.59
SD2 SERIES .60 HP MOTOR					
16248	250	11.3	287	2.7	1.2
14983	450	10.4	264	2.3	1.0
14984	1000	10.4	264	2.3	1.0
14985	2000	9.4	238	1.9	.86
14986	2700	9.4	238	1.9	.86
14987	3500	9.4	238	1.9	.86

PHONE: 775 883 1072 FAX: 775 883 4857