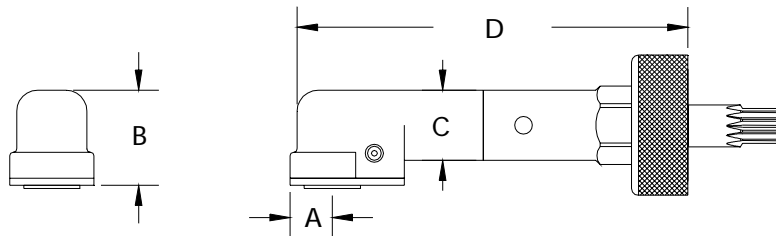


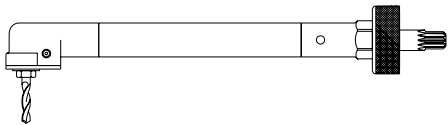
	A	B	C	D	90 DEGREE DRILL	
INCH	.362	.847	.625	3.550	MAXIMUM RECOMMENDED DRILL DIAMETER	.250
MM	9.19	21.5	15.87	90.17		6.35 mm



ALL BEARING 90 DEGREE DRILLS

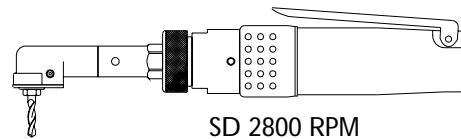


16500 ATTACHMENT ONLY
PART OF THE JIFFY MODULAR DRILL SYSTEM

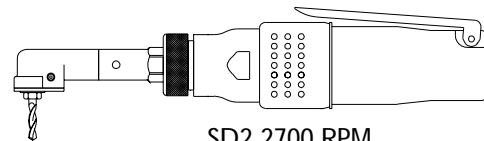


ATTACHMENT SHOWN WITH OPTIONAL
3.750" 95.25mm EXTENSION ASSEMBLY No. 15047

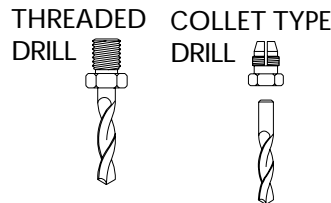
The high nickel alloy
used in our drill attachment gears
make this unit SUPERIOR
in drilling performance.



SD 2800 RPM



SD2 2700 RPM



INTERNAL THREAD	
ADD TO TOOL No.	
1/4-28	A
10-32	C
9/32-40	E
COLLET	D

TOOL ORDER NUMBER	R.P.M.	LENGTH		WEIGHT	
		Inch	mm	Lbs.	Kg.
SD SERIES .30 HP MOTOR					
16478	250	9.9	251	1.5	.68
16479	500	9.9	251	1.5	.68
16480	750	9.9	251	1.5	.68
16481	1000	9.9	251	1.5	.68
16482	1500	9.9	251	1.5	.68
16483	2800	9.0	228	1.3	.59
SD2 SERIES .60 HP MOTOR					
16484	250	11.3	287	2.7	1.2
16485	450	10.4	264	2.3	1.0
16486	1000	10.4	264	2.3	1.0
16487	2000	9.4	238	1.9	.86
16488	2700	9.4	238	1.9	.86
16489	3500	9.4	238	1.9	.86