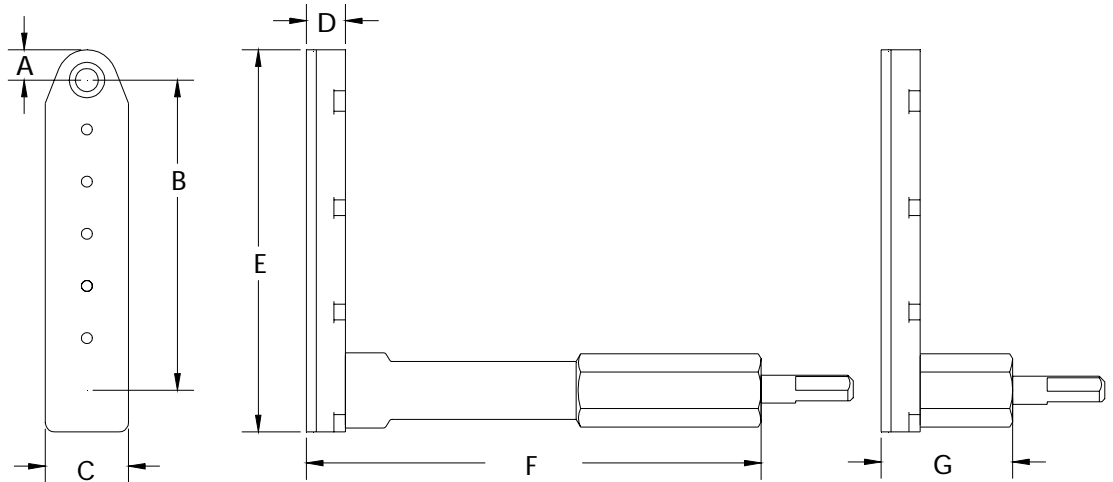


	A	B	C	D	E	F	G	SERIES 3 FLAT ANGLE DRILL	
INCH	.327	3.359	.900	.425	4.127	4.975	1.475	MAXIMUM RECOMMENDED DRILL DIAMETER	.312 INCH
MM	8.30	85.31	22.86	10.79	104.8	126.3	37.46		7.92 mm



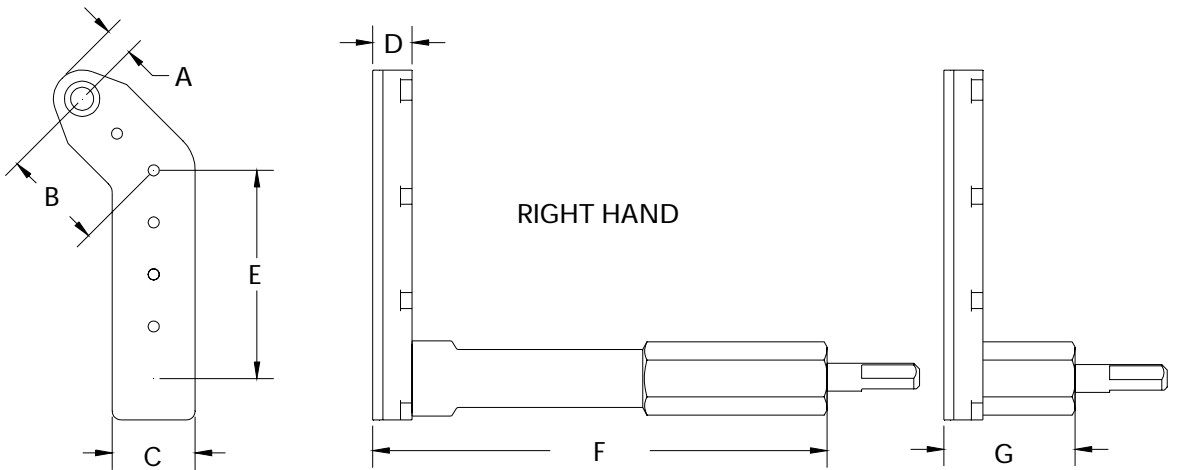
ALL BEARING FLAT ANGLE DRILLS



14861 ATTACHMENT EXTENDED

14862 ATTACHMENT SHORT

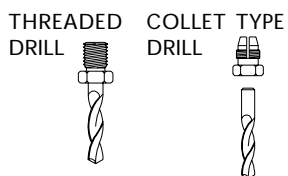
	A	B	C	D	E	F	G	SERIES 3 FLAT ANGLE DRILL	
INCH	.327	1.109	.900	.425	2.250	4.975	1.475	MAXIMUM RECOMMENDED DRILL DIAMETER	.312 INCH
MM	8.30	28.16	22.86	10.79	57.15	126.3	37.46		7.92 mm



14863 ATTACHMENT EXTENDED

14864 ATTACHMENT SHORT

INTERNAL THREAD	
ADD TO TOOL No.	
1/4-28	A
10-32	C
9/32-40	E
5/16-24	F
COLLET	D



ORDER ATTACHMENT NUMBER PLUS NOSE GEAR LETTER  
ADD B FOR BALL LOCK OPTION

DRIVE SHAFT FEATURES 3 FLATS  
SUITED FOR 1/4" 7mm CHUCKS

