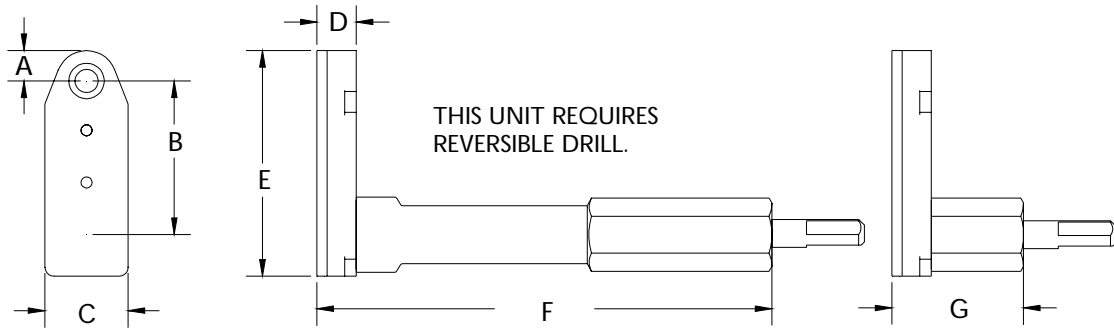


	A	B	C	D	E	F	G	SERIES 3 FLAT ANGLE DRILL	
INCH	.327	1.671	.900	.425	2.440	4.975	1.475	MAXIMUM RECOMMENDED DRILL DIAMETER	.312 INCH
MM	8.30	42.44	22.86	10.79	61.97	126.3	37.46		7.92 mm



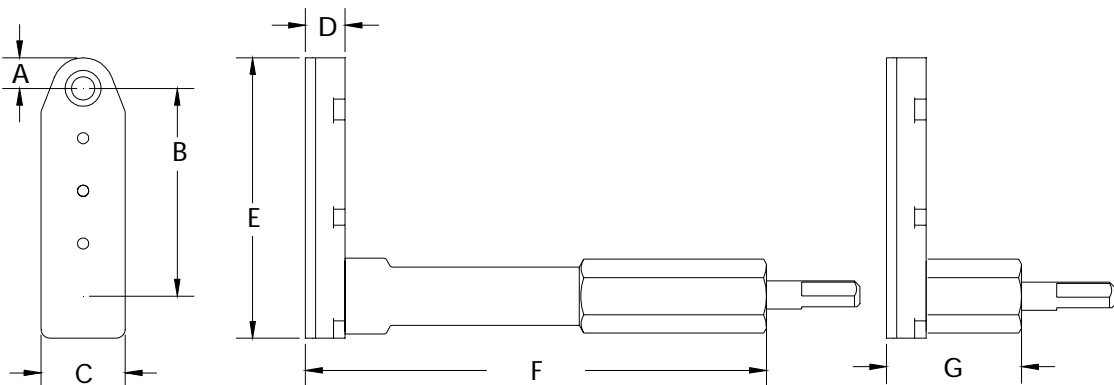
ALL BEARING FLAT ANGLE DRILLS



14857 ATTACHMENT EXTENDED

14858 ATTACHMENT SHORT

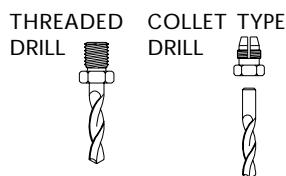
	A	B	C	D	E	F	G	SERIES 3 FLAT ANGLE DRILL	
INCH	.327	2.234	.900	.425	3.00	4.975	1.475	MAXIMUM RECOMMENDED DRILL DIAMETER	.312 INCH
MM	8.30	56.74	22.86	10.79	76.20	126.3	37.46		7.92 mm



14859 ATTACHMENT EXTENDED

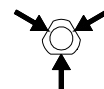
14860 ATTACHMENT SHORT

INTERNAL THREAD	COLLET TYPE
ADD TO TOOL No.	
1/4-28	A
10-32	C
9/32-40	E
5/16-24	F
COLLET	D



ORDER ATTACHMENT NUMBER PLUS NOSE GEAR LETTER  
ADD B FOR BALL LOCK OPTION

DRIVE SHAFT FEATURES 3 FLATS  
SUITED FOR 1/4" 7mm CHUCKS



PHONE: 1 775 883 1072 FAX: 1 775 883 4857