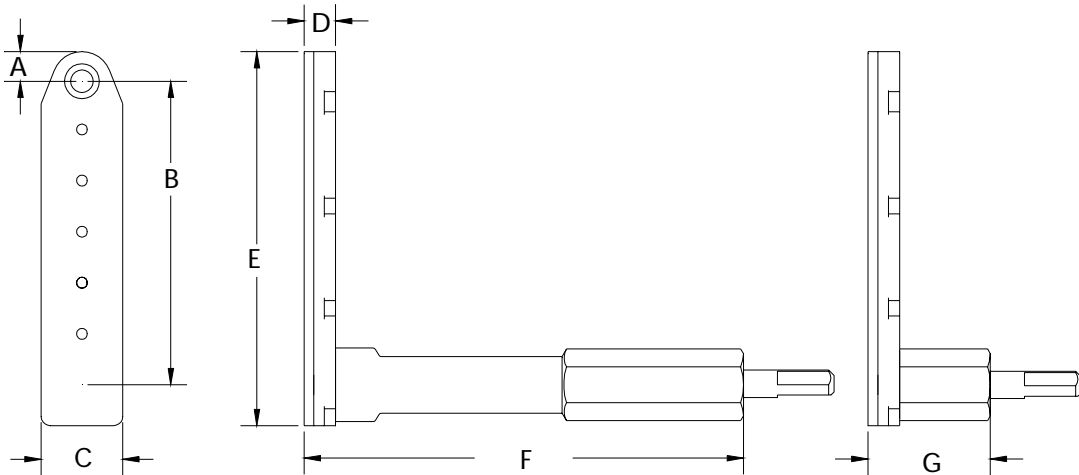


	A	B	C	D	E	F	G	SERIES 2 FLAT ANGLE DRILL	
INCH	.327	3.359	.900	.350	4.127	4.900	1.400	MAXIMUM RECOMMENDED DRILL DIAMETER	.250 INCH
MM	8.30	85.31	22.86	8.89	104.8	124.4	35.56		6.35 mm



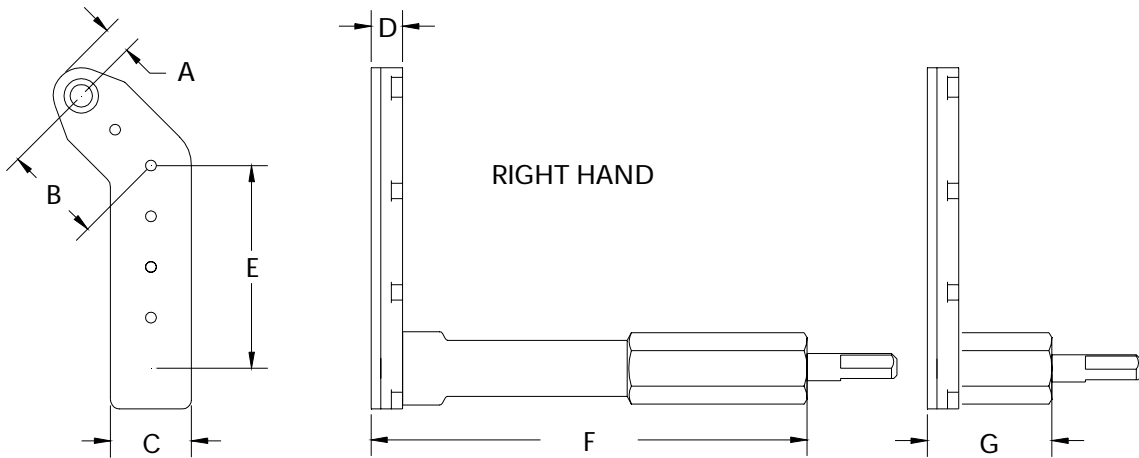
ALL BEARING FLAT ANGLE DRILLS



14849 ATTACHMENT EXTENDED

14850 ATTACHMENT SHORT

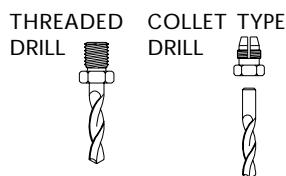
	A	B	C	D	E	F	G	SERIES 2 FLAT ANGLE DRILL	
INCH	.327	1.109	.900	.350	2.250	4.900	1.400	MAXIMUM RECOMMENDED DRILL DIAMETER	.250 INCH
MM	8.30	28.16	22.86	8.89	57.15	124.4	35.56		6.35 mm



14851 ATTACHMENT EXTENDED

14852 ATTACHMENT SHORT

INTERNAL THREAD	
ADD TO TOOL No.	
1/4-28	A
10-32	C
9/32-40	E
5/16-24	F
COLLET	D



ORDER ATTACHMENT NUMBER PLUS NOSE GEAR LETTER
ADD B FOR BALL LOCK OPTION

DRIVE SHAFT FEATURES 3 FLATS
SUITED FOR 1/4" 7mm CHUCKS

