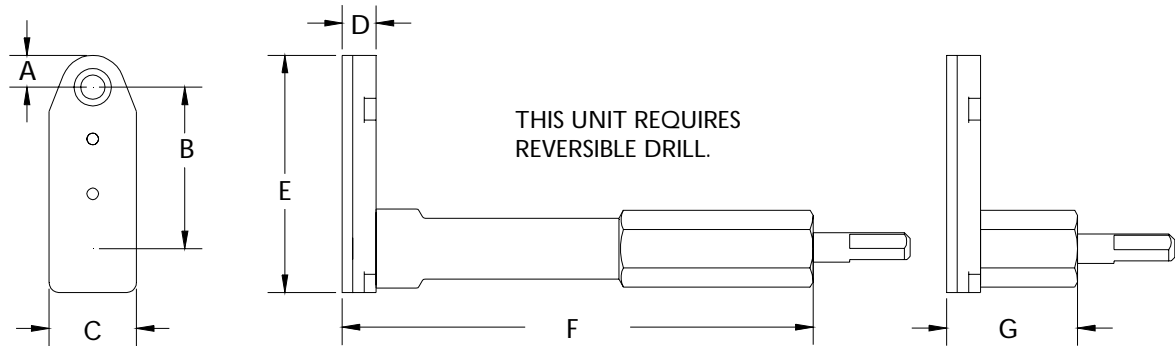


	A	B	C	D	E	F	G	SERIES 2 FLAT ANGLE DRILL	
INCH	.327	1.671	.900	.350	2.440	4.900	1.400	MAXIMUM RECOMMENDED DRILL DIAMETER	.250 INCH
MM	8.30	42.44	22.86	8.89	61.97	124.4	35.56		6.35 mm



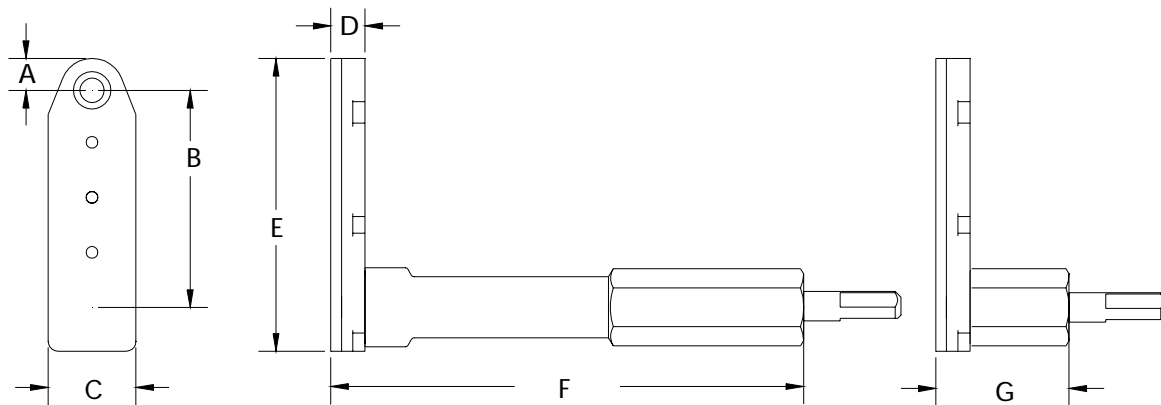
ALL BEARING FLAT ANGLE DRILLS



14845 ATTACHMENT EXTENDED

14846 ATTACHMENT SHORT

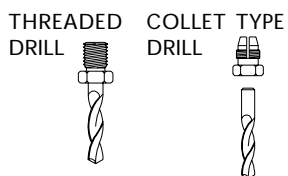
	A	B	C	D	E	F	G	SERIES 2 FLAT ANGLE DRILL	
INCH	.327	2.234	.900	.350	3.00	4.900	1.400	MAXIMUM RECOMMENDED DRILL DIAMETER	.250 INCH
MM	8.30	56.74	22.86	8.89	76.20	124.4	35.56		6.35 mm



14847 ATTACHMENT EXTENDED

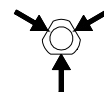
14848 ATTACHMENT SHORT

INTERNAL THREAD	ADD TO TOOL No.
1/4-28	A
10-32	C
9/32-40	E
5/16-24	F
COLLET	D



ORDER ATTACHMENT NUMBER PLUS NOSE GEAR LETTER
ADD B FOR BALL LOCK OPTION

DRIVE SHAFT FEATURES 3 FLATS
SUITED FOR 1/4" 7mm CHUCKS



PHONE: 1 775 883 1072 FAX: 1 775 883 4857