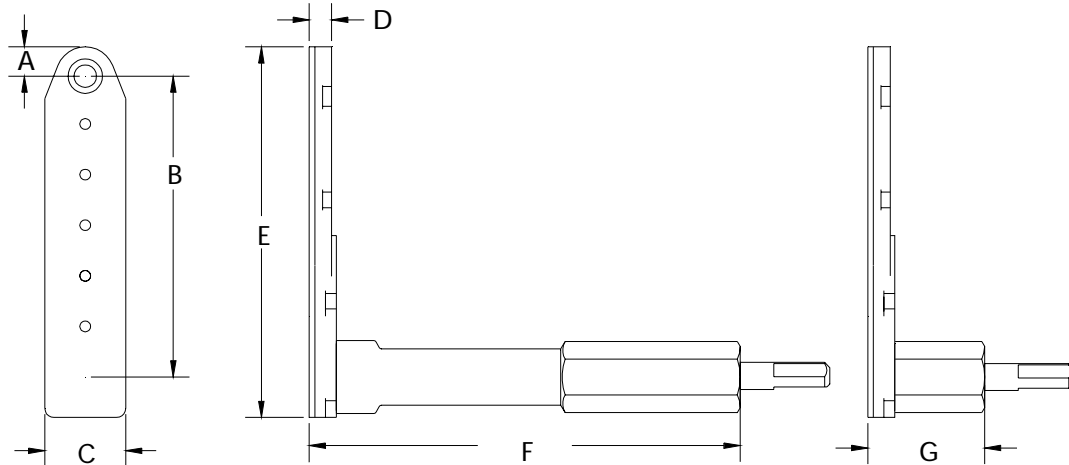


	A	B	C	D	E	F	G	SERIES 1 FLAT ANGLE DRILL	
INCH	.327	3.359	.900	.250	4.127	4.900	1.400	MAXIMUM RECOMMENDED DRILL DIAMETER	.1875 INCH
MM	8.30	85.31	22.86	6.35	104.8	124.4	35.56		4.76 mm



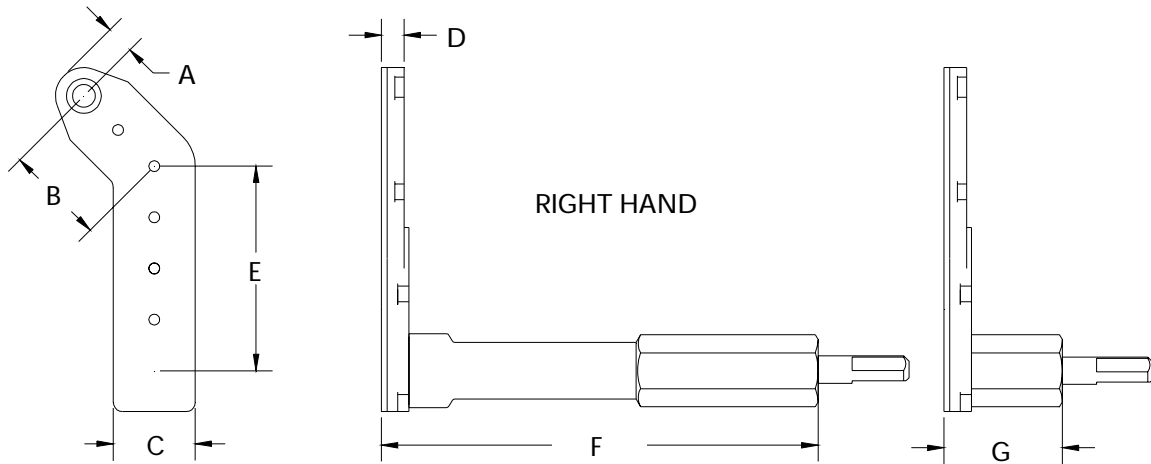
ALL BEARING FLAT ANGLE DRILLS



14837 ATTACHMENT EXTENDED

14838 ATTACHMENT SHORT

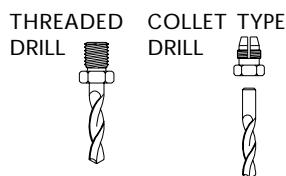
	A	B	C	D	E	F	G	SERIES 1 FLAT ANGLE DRILL	
INCH	.327	1.109	.900	.250	2.250	4.900	1.400	MAXIMUM RECOMMENDED DRILL DIAMETER	.1875 INCH
MM	8.30	28.16	22.86	6.35	57.15	124.4	35.56		4.76 mm



14839 ATTACHMENT EXTENDED

14840 ATTACHMENT SHORT

INTERNAL THREAD	
ADD TO TOOL No.	
1/4-28	A
10-32	C
9/32-40	E
5/16-24	F
COLLET	D



ORDER ATTACHMENT NUMBER PLUS NOSE GEAR LETTER
ADD B FOR BALL LOCK OPTION

DRIVE SHAFT FEATURES 3 FLATS
SUITED FOR 1/4" 7mm CHUCKS

